

# ZECA

Z

TECHNICAL EXCELLENCE. SINCE 1929.

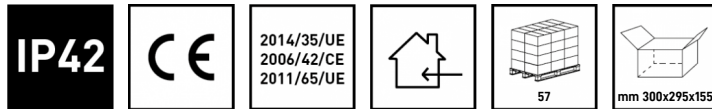
## INDUSTRIAL CABLE REELS SERIES 5000 XF

### ART. 5836/XF

Length (m)  
**16.5**

Number of conductors  
**1 X**

Cross-section (mm<sup>2</sup>)  
**2.5**

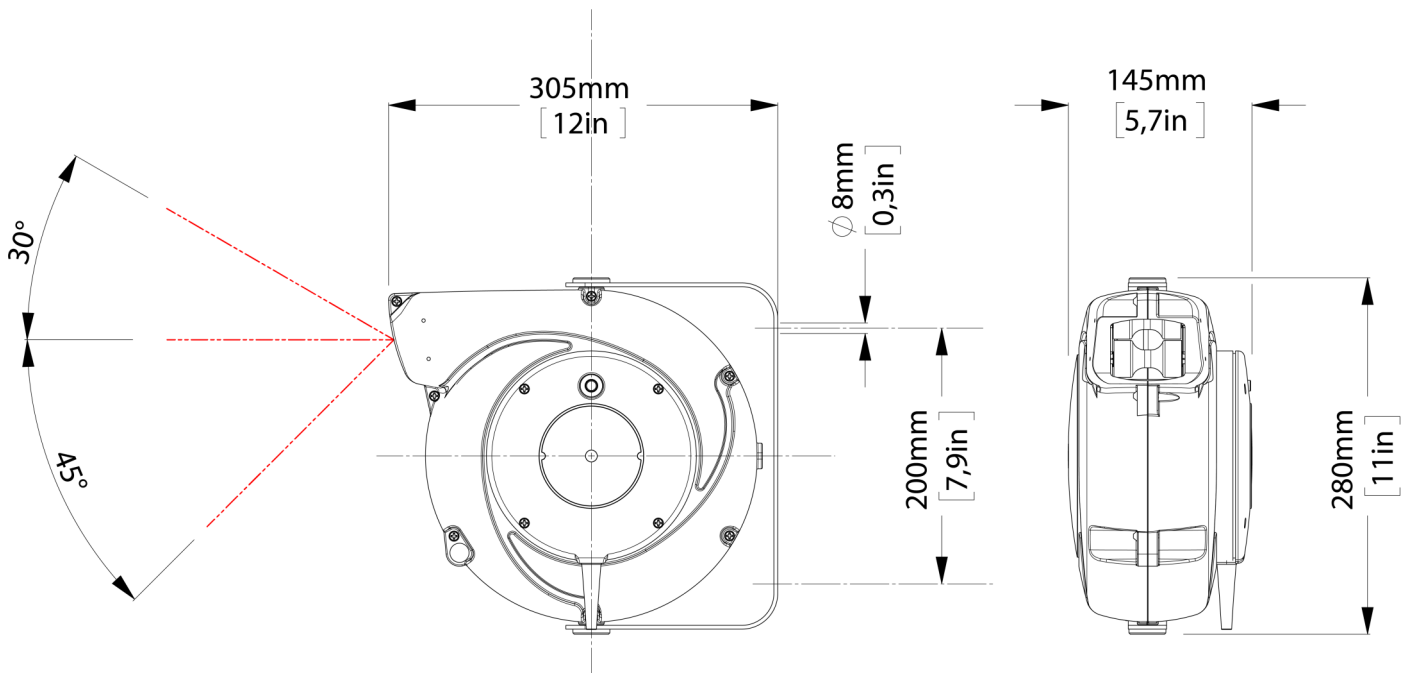


### TECHNICAL DATA

| Article | Cable length (m) | Reel cable length (m) | Cut length (m) | Number of conductors | Cross-section (mm <sup>2</sup> ) | Cable diameter (mm) | Thermal switch | Cable type |
|---------|------------------|-----------------------|----------------|----------------------|----------------------------------|---------------------|----------------|------------|
| 5836/XF | 16.5             | 15                    | 1.5            | 1 X                  | 2.5                              | 5.5                 | NO             | PVC        |

Please note: The images are for illustrative and explanatory purposes only

OVERALL DIMENSIONS



Technical features

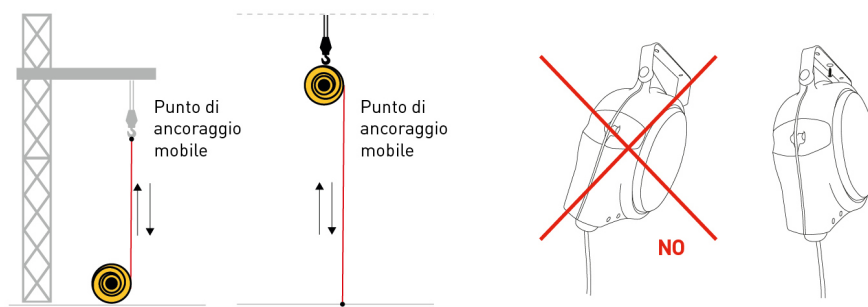
- Structural elements of the winder in shockproof plastic
- Roller cable guide mouth.
- Cable stop device with rack that can be inserted every 50cm. Easily eliminated if the cable is constantly in traction.
- Double ground contact.
- Collector insulation voltage 2.5 KV.
- Sliding contacts with collector ring and brushes.
- Degree of protection IP42.
- Ambient operating temperature -5 ° C / + 50 ° C.
- Supplied without piece on the power supply side.
- Models with both PVC and rubber cables are available.

OPTIONAL  
ACCESSORIES AND  
SPARE PARTS

**ART. 949/5000**

for winder 5000

Optional bracket fixing device. Essential for  
ceiling-mounting.



OPTIONAL  
ACCESSORIES AND  
SPARE PARTS

**ART. 5100**  
XF to XL conversion kit.

